

Properties

Anti-fall protection

Anti-fall protection



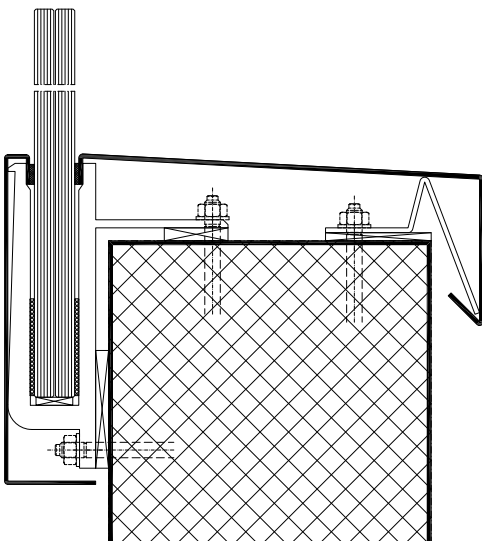
Unlike balustrade windows, floor to ceiling glass windows on the upper floors must guarantee the anti-fall protection.

Sky-Frame uses an anti-fall insulating glass combination of laminated safety glass and tempered safety glass with heat soak test, starting on the first floor.

Using this anti-fall glass, Sky-Frame 2 was tested by the Munich University of Applied Sciences and has been certified the anti-fall protection in compliance with TRAV/TRLV to the overall system (category A).

This test also covers partially open systems. A wing can therefore also be opened 11 cm without any anti-fall components for ventilation purposes (with included opening limiter).

Sky-Frame all-glass balustrades



A prerequisite for the anti-fall protection on terraces and balconies is a balustrade.

The Sky-Frame all-glass balustrade meets this requirement and uses a heavy-duty, anti-fall glass without an interrupting handrail (without a handrail only permitted in Switzerland).

The resulting, largely invisible glass strip transitions seamlessly into the Sky-Frame glass, provides unrestricted views and additionally fulfills the aspect of total security.

The glass is held by an especially developed substructure, which offers the possibility of numerous building connection options.

The Munich University of Applied Sciences confirms the compliance with the requirements according to TRAV/TRLV (category B) for the all-glass balustrade with a 2 cm thin handrail attachment profile.

Sustainability

Quality

Maintenance



Sky-frame sliding windows are maintenance free.

The functionality remains for a long time due to the stainless steel guide track and the dirt-repellent running gear.

Commercial glass cleaning products can be used for leaning the glass.

Due to the centralised production with externally monitored quality assurance and our continuously trained sales partners a consistently top quality of all products will be guaranteed.



Within the scope of the approval for CE labeling, numerous tests were performed in accordance with applicable product and testing standards.

This ensures that Sky-Frame complies with the applicable European Directives and national product standards.

Every Sky-Frame system is supplied with detailed documentation including usage and care instructions according to the international CE standard from Sky-Frame.

Sales

Please contact one of our over 70 distributors in Europe and the USA for more information and personal consultation.

Your regional contact, news, CAD data and references can be found at: www.sky-frame.ch

Awards

Sky-Frame is a multiple award-winning product that complies with both the aesthetic and functional state of the art.

