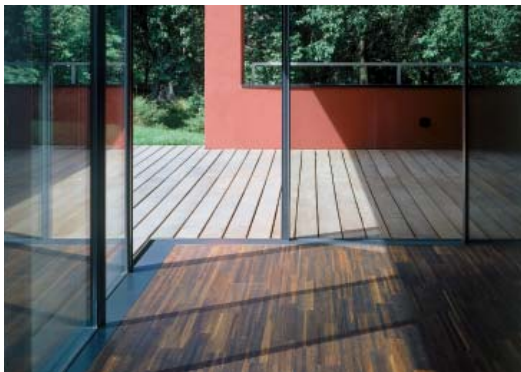


Properties

No threshold

No threshold



Measures necessary for proper building physical construction of a threshold-free detail are implemented in the sophisticated Sky-Frame bottom detail without compromise.

The drainage level with a reliable outward water drainage is integrated in the profile.

The bottom profile provides a large surface for a safe application of sealing sheets.

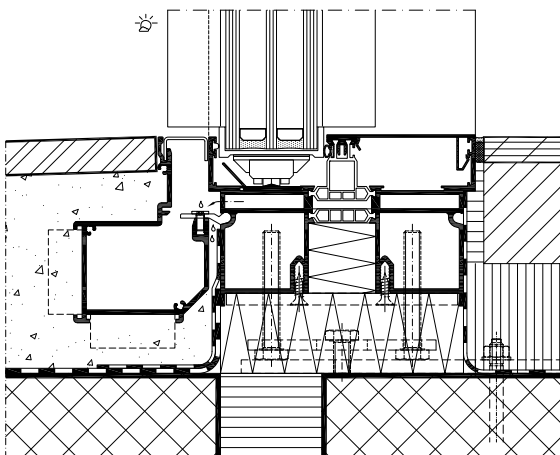
This detail, which is met by the Swiss standard SIA 271, secures the rapid and controlled drainage of even the heaviest rain volume.

Consistent thermal separation of warm/cold shells by the optimal placement and development of the polyamide middle bar.

Various system gutters with stainless steel covers.

Easy to clean, without deep ditches or tracks.

Barrier-free construction



Smooth transitions and barrier-free accessibility are non-age related characteristics in the construction.

The barrier-free accessibility standard in the building according to standard DIN 18040-1+2 has an increasing significance alone in view of the increasing proportion of elderly in the population.

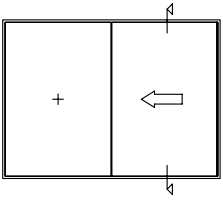
A single sliding wing already provides a passage width of up to 2.3 meters, and therefore also provides sufficient room to move for accompanied wheelchair users.

The electric drive is an additional convenience feature for this target group. It is used in retirement and nursing homes with great success.

Be it wheelchair or pram - threshold-free details provide maximum mobility.

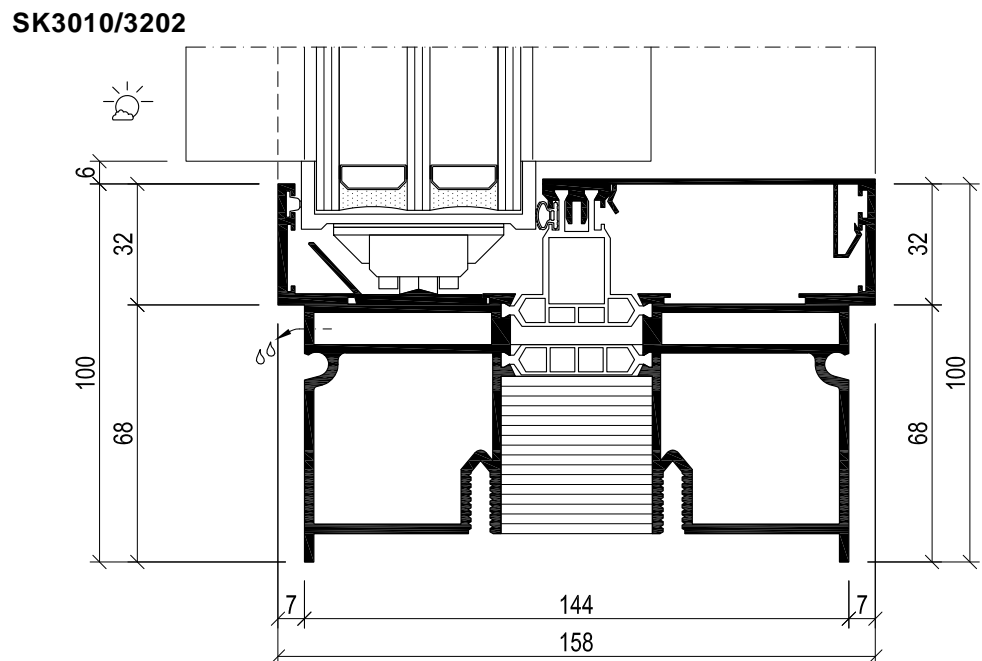
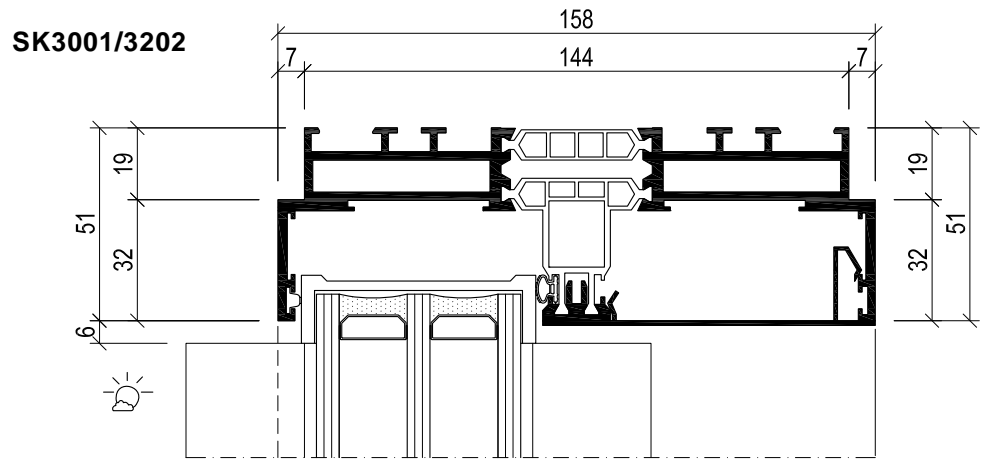
Sky-Frame 3

Vertical section 2-track



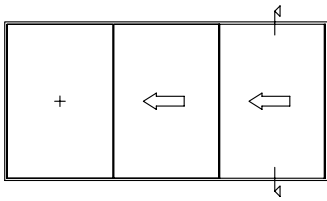
Sliding panel
outside

M 1:2



Sky-Frame 3

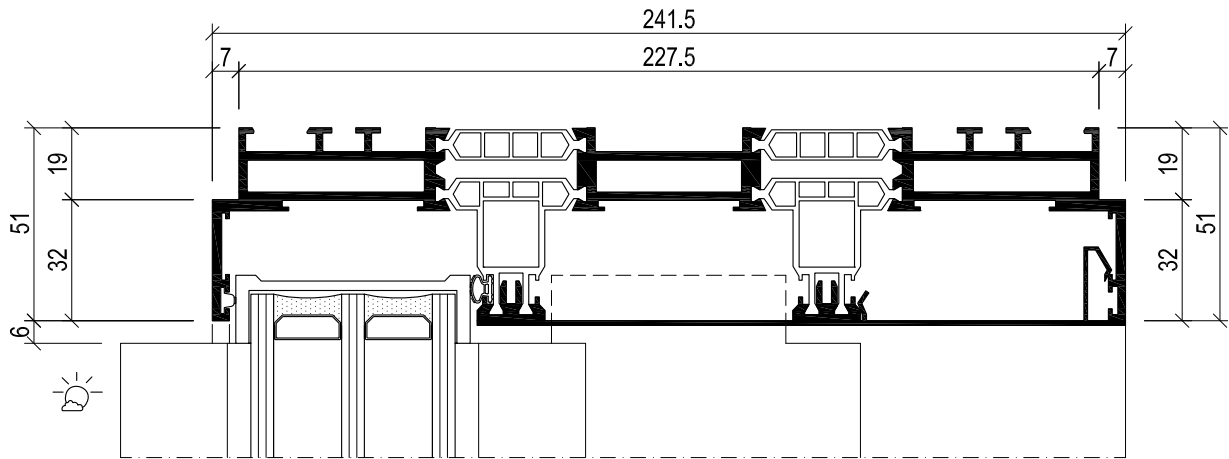
Vertical section 3-track



Sliding panel
outside

M 1:2

SK3004/3212



SK3011/3212

